

EnviroCentre is a dynamic and innovative environmental consultancy with offices in Glasgow, Stonehaven and Belfast.

EnviroCentre have a dedicated Catchment Management team of Engineers, Hydrologists, Ecologists, Hydro-Ecologists, GIS Professionals and Technicians who have worked throughout the UK and internationally on River, Coastal and Wetland Projects.

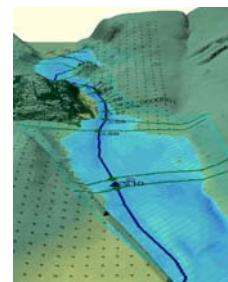
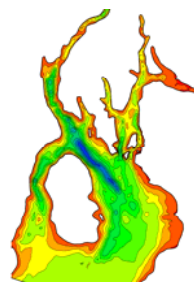
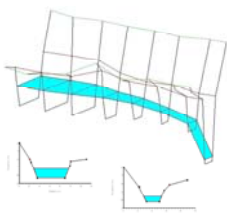


Key services provided by the EnviroCentre Catchment Management team include:

- Flood Risk Assessment and Management
- Hydrodynamic Modelling (Fluvial and Coastal)
- GIS (including 3D mapping and visualisation)
- Hydrological & Hydrogeological Assessments
- River and Habitat Restoration
- Ecological Surveys and Habitat Management
- Wetland Design and Management
- River and Coastal Engineering (flood defence, erosion protection, dredging)
- SuDS design
- Water Resource Assessment
- Hydrological Monitoring Networks
- Expert Witness

Other key services provided by EnviroCentre include:

- Environmental Assessment & Monitoring
- Contaminated Land Assessment and Remediation
- Resources and Sustainability



www.envirocentre.co.uk

Craighall Business Park, Eagle Street, Glasgow G4 9XA

t 0141 341 5040

f 0141 341 5045

e info@envirocentre.co.uk